


# Mabuhay!!

Distinguished Guests from

**The Canadian International  
Development Agency**




**SELECTED INFORMATION  
ABOUT THE PHILIPPINE  
LOCAL GOVERNMENT  
SYSTEM**



## Salient Features of the LGCode of 1991

- It allocates more powers, functions, responsibilities and resources among LGUs
- It mandates the establishment in every LGU of an accountable, efficient and dynamic organizational structure and operating mechanisms that meet the priority needs
- It allows the LGUs to group themselves, consolidate or coordinate their efforts, services, and resources for purposes that will benefit them all
- It allows the LGUs to participate actively in the implementation of national programs and projects to enhance their capabilities



## Salient Features of the LGCode of 1991

- It enjoins the State to share with LGUs the responsibility of managing and maintaining ecological balance within their territorial jurisdictions
- It lays down the mechanisms that ensure the accountability of LGUs to their respective constituents
- It provides penalties and sanctions for acts that violate its provisions
- It allows and encourages people's and non-governmental organizations and the private sector to participate actively in local governance, particularly in the delivery of basic services, to ensure the viability of local autonomy as an alternative strategy for sustainable development
- It gives more flesh to the concept and principles of decentralization




SELECTED INFORMATION ABOUT THE PHILIPPINE LOCAL GOVERNMENT SYSTEM




▶ HOME ◀

## The Philippine Local Government NETWORK

- **81 PROVINCES**
- **118 CITIES**
  - 28 Highly Urbanized Cities
  - 4 Independent Component Cities
  - 85 Component Cities
- **1,506 MUNICIPALITIES**
- **41,993 BARANGAYS**



SELECTED INFORMATION ABOUT THE PHILIPPINE LOCAL GOVERNMENT SYSTEM



▶ HOME ◀

## LGUs Defined

- **Province** – composed of a cluster of municipalities and cities and as a political and corporate unit of government, serves as a dynamic mechanism for development processes and effective governance of LGUs within its territory



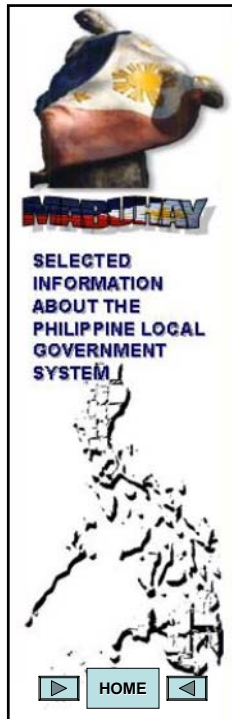
## LGUs Defined

- **Component City-** consist of more urbanized and developed barangays, serves as a general purpose government for coordination and delivery of basic, regular and direct services and effective governance of the inhabitants within its territorial jurisdiction.
- **Independent component cities-** cities whose charters prohibit their voters from voting for provincial elective officials; independent of the province



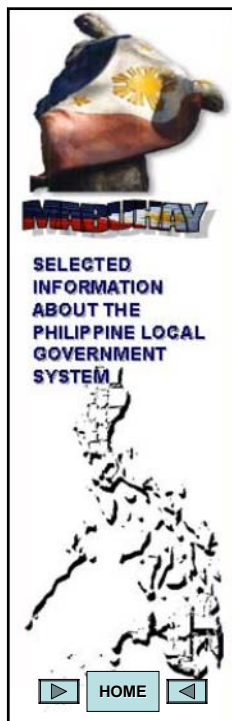
## LGUs Defined

- **Highly Urbanized Cities-** cities with minimum population of 200,000 inhabitants with latest annual income of at least 50 M




## LGUs Defined

- **Municipality**- consist of a group of barangays, serves as a general purpose government for the coordination and delivery of basis, regular and direct services and effective governance of the inhabitants within its territory.




## LGUs Defined

- **Barangay**- a basic political unit , serves as the primary planning and implementing unit of government policies, plans, programs, projects and activities in the community, and as a forum wherein the collective views of the people may be expressed, crystallized and considered, and where disputes may be amicably settled.



**PHILIPPINE LOCAL GOVERNMENT SYSTEM**

SELECTED INFORMATION ABOUT THE PHILIPPINE LOCAL GOVERNMENT SYSTEM



▶ HOME ◀


## Population Size

- **Province** – at least 250,000
- **City** – at least 150,000
- **Municipality** – at least 25,000
- **Barangay** – at least 2000 in cities/municipalities  
5000 in HUCs



**PHILIPPINE LOCAL GOVERNMENT SYSTEM**


SELECTED INFORMATION ABOUT THE PHILIPPINE LOCAL GOVERNMENT SYSTEM



▶ HOME ◀


## Land Area

- **Province** – at least 200,000 has.
- **City** – at least 10,000 has.
- **Municipality** – at least 5,000 has.




**PHILIPPINE LOCAL GOVERNMENT SYSTEM**

SELECTED INFORMATION ABOUT THE PHILIPPINE LOCAL GOVERNMENT SYSTEM




▶ HOME ◀

## Classification




- Based on income, except barangays
- Existing income classification, 1<sup>st</sup> – 6<sup>th</sup> class, except barangays



**PHILIPPINE LOCAL GOVERNMENT SYSTEM**

SELECTED INFORMATION ABOUT THE PHILIPPINE LOCAL GOVERNMENT SYSTEM



▶ HOME ◀

## Annual Income Range

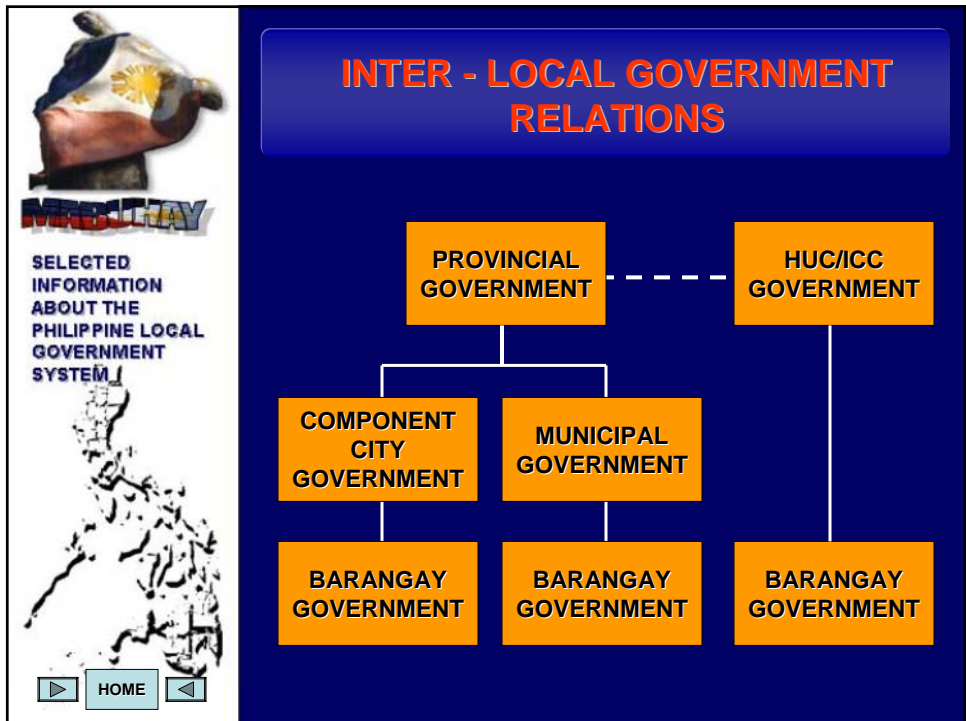
- **Province** – below PhP 35 M to as high as PhP 981 M (Cebu Province)
- **City** – below PhP 35 M to as high as PhP 5 + B (Quezon City)
- **Municipality** – below PhP 7 M to as high as PhP 239 M (Calamba, Laguna)
- **Barangay** – below PhP 100 T to as high as PhP 16 M (Brgy. 176, Caloocan City)



SELECTION INFORMATION ABOUT THE PHILIPPINE LOCAL GOVERNMENT SYSTEM

[▶ HOME ◀](#)

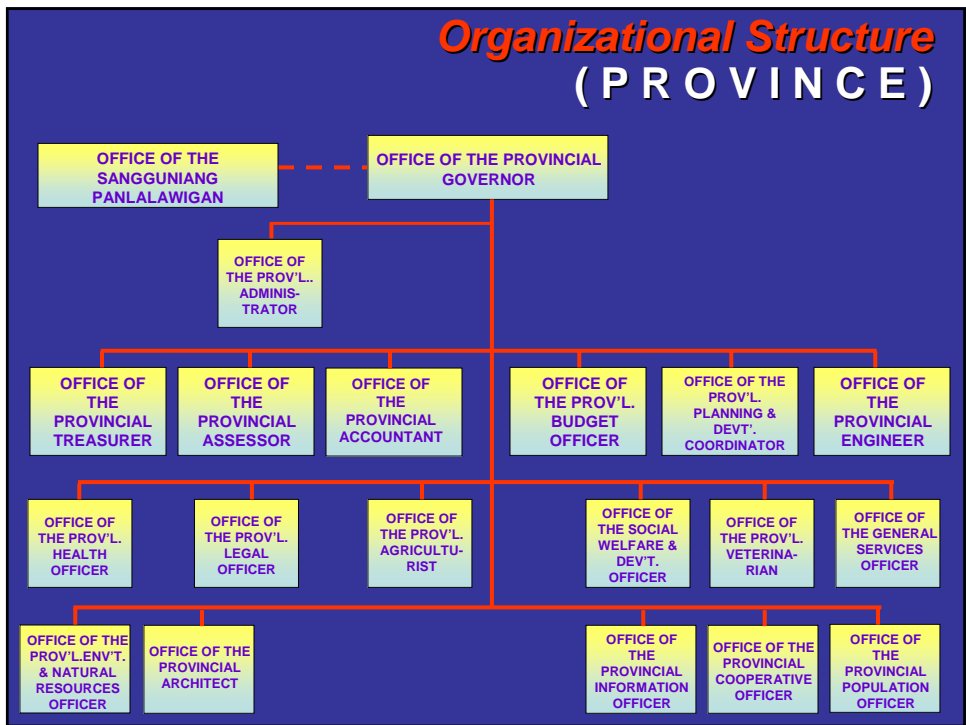
# Infrastructures such as physical, financing, telecommunications and power are fairly developed in most LGUs



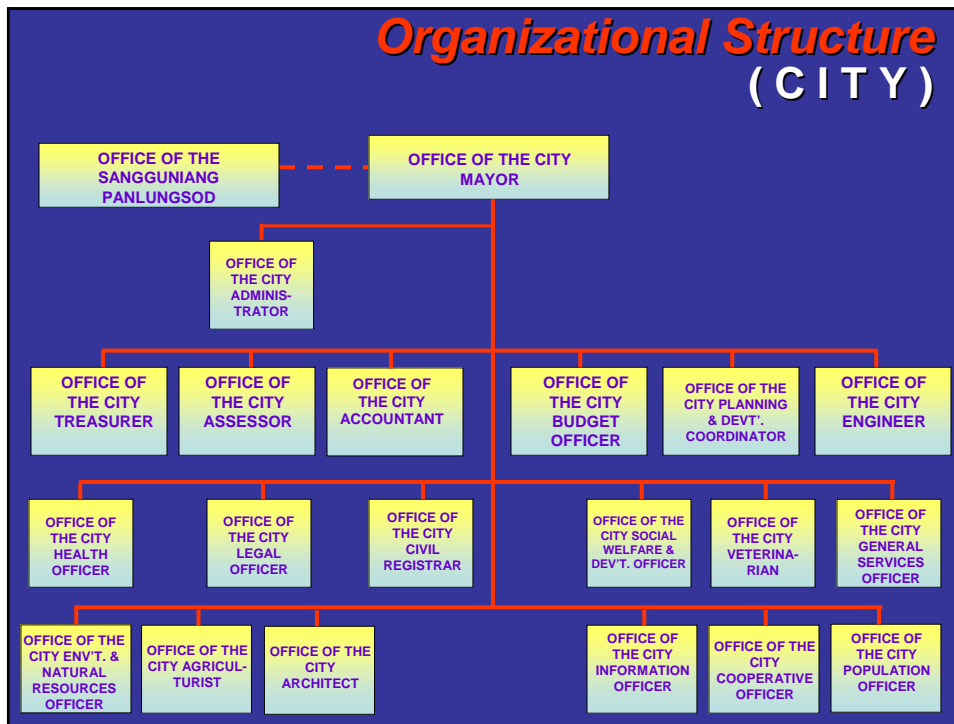


## General Welfare is the Business of Local Governments

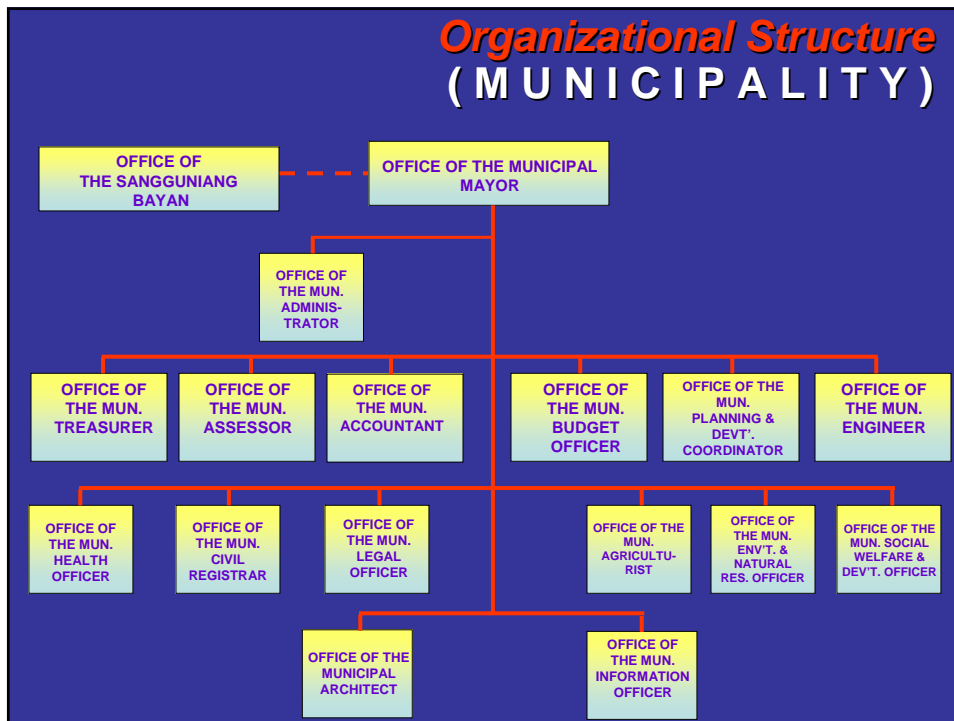
- Preserve and enrich culture
- Promote health and safety
- Enhance the right of the people to a balanced ecology
- Encourage and support the development of appropriate and self-reliant scientific and technological capabilities
- Improve public morals, enhance economic prosperity and social justice
- Promote full employment among their residents
- Maintain peace and order
- Preserve the comfort and convenience of their inhabitants




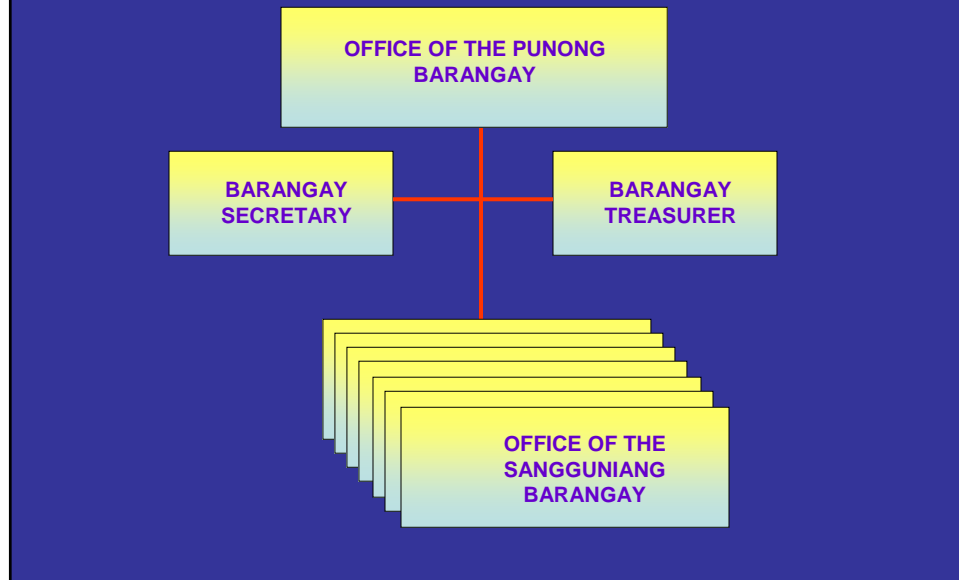
## Organizational Structure (CITY)




## Organizational Structure (MUNICIPALITY)



## Organizational Structure (BARANGAY)




SELECTED INFORMATION ABOUT THE PHILIPPINE LOCAL GOVERNMENT SYSTEM



### FINANCING GOVERNMENTAL FUNCTIONS AND SERVICES


- Local Impositions
- Internal Revenue Allotment
- Domestic Borrowings
- Grants
- Bonds, BOT, etc.

▶ HOME ◀



**PHILIPPINE LOCAL GOVERNMENT SYSTEM**


SELECTED INFORMATION ABOUT THE PHILIPPINE LOCAL GOVERNMENT SYSTEM



▶ HOME ◀


## ISSUES AFFECTING LOCAL ADMINISTRATION AND DEVELOPMENT

- ADMINISTRATIVE CAPACITY
- FINANCIAL
- ECONOMIC
- SOCIAL
- ENVIRONMENTAL
- POLITICAL



**PHILIPPINE LOCAL GOVERNMENT SYSTEM**

SELECTED INFORMATION ABOUT THE PHILIPPINE LOCAL GOVERNMENT SYSTEM




▶ HOME ◀

## ISSUES AFFECTING LOCAL ADMINISTRATION AND DEVELOPMENT

### ADMINISTRATIVE CAPACITY

- Internal systems relative to customer services wanting in good governance values
- Level of executive, managerial and technical competencies not commensurate to the requirements of effective local administration
- Management tools not fairly developed




SELECTED INFORMATION ABOUT THE PHILIPPINE LOCAL GOVERNMENT SYSTEM

▶ HOME ◀

## ISSUES AFFECTING LOCAL ADMINISTRATION AND DEVELOPMENT

### ADMINISTRATIVE CAPACITY

- Inadequate financial management system
- Database for effective planning and budgeting not fully developed or non-existent
- E-governance either not fully developed or non-existent




SELECTED INFORMATION ABOUT THE PHILIPPINE LOCAL GOVERNMENT SYSTEM

▶ HOME ◀


## ISSUES AFFECTING LOCAL ADMINISTRATION AND DEVELOPMENT

### FINANCIAL

- High dependency on the IRA
  - Province – 79%
  - City – 42%
  - Municipality – 72%
- Low tax base
- Low tax collection efficiency
- Weak political will to exercise broadened taxing powers



**SELECTED INFORMATION ABOUT THE PHILIPPINE LOCAL GOVERNMENT SYSTEM**




▶ HOME ◀


## ISSUES AFFECTING LOCAL ADMINISTRATION AND DEVELOPMENT

### ECONOMIC

- Limited job and livelihood opportunities
- High rate of unemployment
- Low income per capita
- High economic dependency ratio



**SELECTED INFORMATION ABOUT THE PHILIPPINE LOCAL GOVERNMENT SYSTEM**




▶ HOME ◀


## ISSUES AFFECTING LOCAL ADMINISTRATION AND DEVELOPMENT

### SOCIAL

- Out-of-school youth
- High morbidity rate
- Large squatter population
- High Incidence of index crime



SELECTED INFORMATION ABOUT THE PHILIPPINE LOCAL GOVERNMENT SYSTEM




▶ HOME ◀


## ISSUES AFFECTING LOCAL ADMINISTRATION AND DEVELOPMENT

### ENVIRONMENTAL

- Diminishing tree cover in the urban ecosystem
- Low agricultural productivity due to the poor operability of agricultural lands
- Ineffective solid waste management practices
- Continuing threats to biodiversity resources



SELECTED INFORMATION ABOUT THE PHILIPPINE LOCAL GOVERNMENT SYSTEM




▶ HOME ◀

## ISSUES AFFECTING LOCAL ADMINISTRATION AND DEVELOPMENT


### POLITICAL

- Lack of program continuity
- Preference for high-profile projects, e.g. roads, waiting sheds instead of social services
- Political bickering between the local chief executive and local legislators
- Token participation of CSOs and the private sector in governance



**DEPARTMENT OF LOCAL GOVERNMENT SERVICES**

SELECTED INFORMATION ABOUT THE PHILIPPINE LOCAL GOVERNMENT SYSTEM



▶ HOME ◀

## Autonomous Regions

- Created under the 1986 Constitution
- Autonomous regions in Muslim Mindanao and in the Cordilleras
- Consist of provinces, cities, municipalities and geographical areas with common/distinctive historical and cultural heritage, economic and social structures



**DEPARTMENT OF LOCAL GOVERNMENT SERVICES**

SELECTED INFORMATION ABOUT THE PHILIPPINE LOCAL GOVERNMENT SYSTEM



▶ HOME ◀

## Autonomous Regions

- The President of the Philippines shall exercise general supervision over autonomous regions to ensure that laws are faithfully executed
- Powers, functions and responsibilities not granted by the Constitution or by law to the shall be vested in the National Government
- The ARs shall be governed by an Organic Act enacted by Congress with participation of the regional consultative commission composed of representatives appointed by the President



**METRO MANILA**

SELECTED INFORMATION ABOUT THE PHILIPPINE LOCAL GOVERNMENT SYSTEM



▶ HOME ◀

## Metro Manila

- **Metropolitan Manila is a special development and administrative region**
- a public corporation created under Presidential Decree No. 824, embracing the Cities of Caloocan, Manila, Mandaluyong, Pasay, Quezon, Las Piñas, Makati, Malabon, Marikina, Muntinlupa Navotas, Parañaque, Pasig, Pateros, San Juan, Tagig, and Valenzuela
- **affairs of Metropolitan Manila shall be administered by the Metropolitan Manila Development Authority (MMDA)**



**METRO MANILA**


SELECTED INFORMATION ABOUT THE PHILIPPINE LOCAL GOVERNMENT SYSTEM




▶ HOME ◀

## Metro Manila


- **Metropolitan Manila is a special development and administrative region**
- **MMDA performs planning, monitoring and coordinative functions, and exercises regulatory and supervisory authority over the delivery of metro-wide services within Metro Manila without diminution of the autonomy of the local government units concerning purely local matters.**




SELECTED  
INFORMATION  
ABOUT THE  
PHILIPPINE LOCAL  
GOVERNMENT  
SYSTEM



**End of Presentation.**



SELECTED  
INFORMATION  
ABOUT THE  
PHILIPPINE LOCAL  
GOVERNMENT  
SYSTEM



**SALAMAT PO!**